

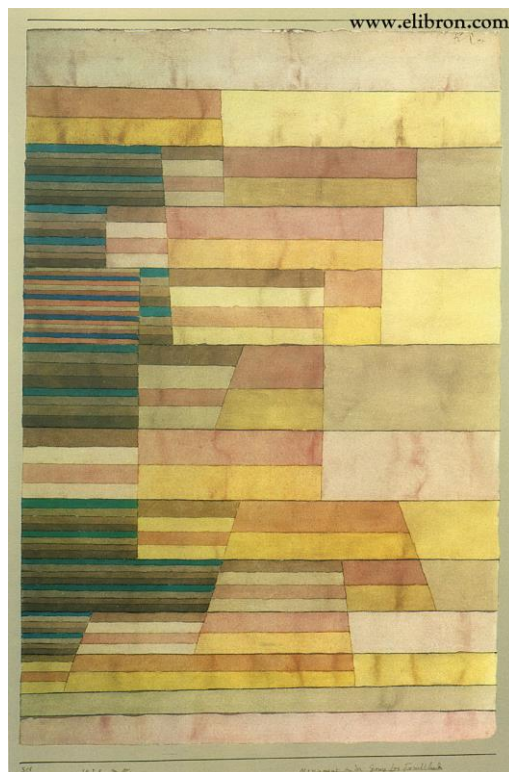
Lesson 4: Resource 2

Development Class Session 4: Listening

Boulez's *Structures 1a* for 2 pianos, inspired by *Paul Klee's Monument in the fertile country*

Boulez tightly controls all musical elements by using a formula that let him determine pitch using a 12-tone row), note-length, dynamics and articulation – this eliminated personal taste!

Klee's abstract painting brings to mind a rural landscape viewed from above – Boulez saw it as the end of fruitful life, and a reorganising of values. You could see this as an end to Romantic, lush writing.



Musical pointers:

- Very tightly controlled structure – the opposite of where this project began! Tightly controlled note-length, dynamics, articulation and pitch that are ever-changing and unpredictable
- Atonal (yet totally controlled)
- Angular (yet totally controlled)
- Stark instrumentation

Other Ideas:

- Mussorgsky's *Pictures At An Exhibition* with pictures by Victor A Hartman
- Vaughan Williams' *Job* inspired by William Blake's *The Book of Job* engravings
- Morton Feldman's *Rothko Chapel* inspired by Mark Rothko's 14 paintings displayed in the chapel.
- Mark-Anthony Turnage's *Three Screaming Popes* inspired by Francis Bacon's triptych
- Stravinsky's *The Rake's Progress* inspired by Hogarth's paintings