




BIRMINGHAM CITY
School of Education
and Social Work

MASTER'S IN TEACHING AND LEARNING (MTL): PROFESSIONAL DEVELOPMENT FOR EDUCATORS

This course is designed to boost your professional learning within the education sector, and allows you to study for further qualifications alongside your current job.

 bcu.ac.uk/mtl

 [bcuhels](https://www.facebook.com/bcuHELS)

 [@bcuhels](https://twitter.com/bcuHELS)



Empowering you to

INSPIRE THEM

Birmingham City University

WHY CHOOSE US?

This course will enable you to:

- build on previous professional learning and workplace practice;
- take increasing responsibility for your own professional development through personalised and collaborative learning that draws on agreed content areas and workplace priorities;
- develop professional attributes, knowledge, skills and understanding together with practice-based enquiry skills in relation to the subject(s) and phase taught;
- develop skills of enquiry and the use of evidence, in relation to the impact of professional practice on the outcomes for learners within the work context;
- be at the forefront of professional practice in a specialist field in a subject, phase or aspect of teaching and/or leadership and be able to demonstrate effectiveness in enabling learners to make good progress;
- exhibit the characteristics of a confident and effective professional learner, able to stimulate and support a collaborative learning culture among immediate colleagues and within a wider professional community;
- become a proactive member of a wider group of experts in the chosen specialism.

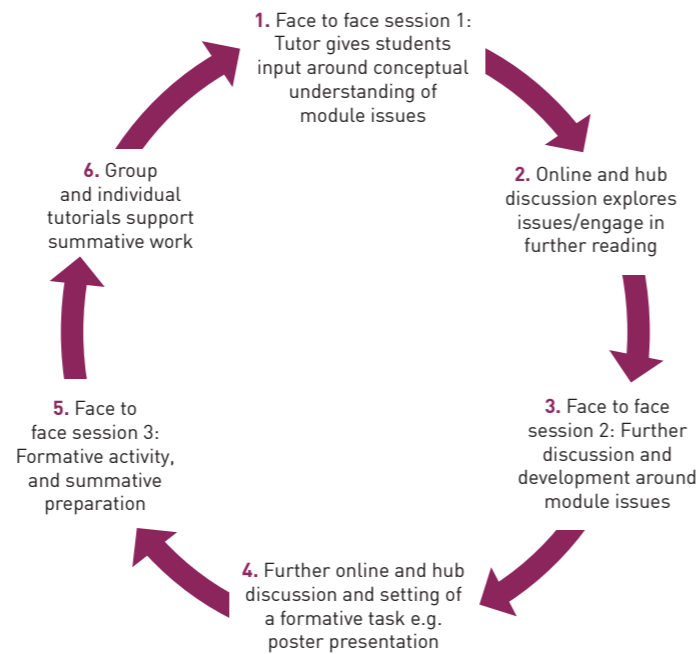
Although this course is taught off-site, you will still have access to our campus facilities including the library, at our City South Campus in Edgbaston. This also includes access to e-resources, such as online journals, and Moodle, our virtual learning environment.

COURSE OVERVIEW

This part time course is taught and studied within your work place, such as your school or college, to groups of teachers, and is tailored to your everyday practice, to make it as relevant to you and your colleagues as possible.

You'll be involved in action research, class observation and textual analysis of policy documents and there is a strong emphasis on practice-led enquiry.

The MTL learning process is circular and consists of 6 stages:



For each 20 credit module, there are five hours of seminars, and a one hour tutorial.



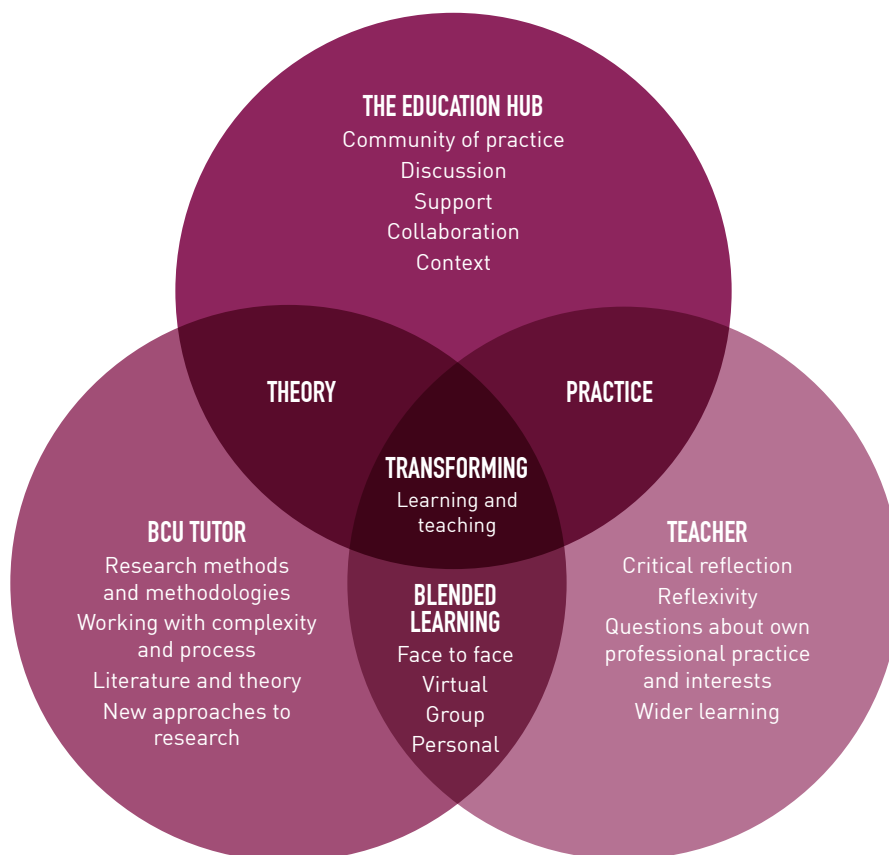
MODULES

MASTER'S IN TEACHING AND LEARNING			
Stage 1 (60 Credits) Leading to PG Cert in Education	Introduction to Master's Level Study: EDU7392 (20 credits)	Reflecting on the Workplace: EDU7354 (20 credits)	Curriculum Matters: EDU7366 (20 credits)
	Introduction to Master's Level Study: EDU7392 (20 credits)	Accredited Experiential Learning: EDU7360 (AEL) (40 credits) Based on evidence of your previous experience	
	Accredited Certificated Learning (ACL) can be used to replace some or all introductory modules (e.g. PGCE Level 7). There is an administrative charge for this process.		
Stage 2 (60 Credits) Leading to PG Dip in Education	Assessment: EDU7361 (20 credits)	Researching Teaching and Learning: EDU7374 (40 Credits): Methodology and ethics including a pilot enquiry based on the realities of practice	
	Reflecting on the Workplace: EDU7354 (20 credits): To identify enquiry focus	Researching Teaching and Learning: EDU7374 (40 Credits): Methodology and ethics including a pilot enquiry based on the realities of practice	
	Reflecting on the Workplace: EDU7354 (20 credits): To identify enquiry focus	Researching Teaching and Learning: EDU7374 (40 Credits): Methodology and ethics including a pilot enquiry based on the realities of practice	
Stage 3 (60 Credits) Leading to Master's in Teaching and Learning	Dissertation: EDU7369 (60 credits): Extended enquiry to challenge and transform practice. Literature, methods and ethics will be embedded into the research process to enhance research depth, quality and integrity. Colleagues at this stage would join our other Master's students and receive 10 hours tutorial time with a designated tutor.		



A PARTNERSHIP APPROACH

We are proud of our practice and evidence based approach, and our partnerships with a variety of education based establishments across the midlands region. We believe the combination of our teaching methods, expertise, and contributions from you, and our partners, combine to produce positive results that can transform learning and teaching for all involved.



FIND OUT MORE

For more information about this course, and how to apply via your nearest/most relevant Education Hub, please contact the team:

Ian Axtell, Course Lead
E: ian.axtell@bcu.ac.uk
T: 0121 331 7322

Matthew Cousens, Course Administration
E: matthew.cousens@bcu.ac.uk
T: 0121 331 7302

